

Four Dead In Fire As Tesla Doors Fail To Open After Crash



SHARE

A devastating accident in Toronto involving a Tesla Model Y resulted in the tragic deaths of four individuals and the miraculous rescue of a young woman. The crash, which occurred on October 24, has raised serious questions about the safety of Tesla's electronic door mechanisms.

A Tesla Model Y carrying five passengers lost control while traveling at high speed. The vehicle struck a guardrail and subsequently collided with a concrete pillar, bursting into flames upon impact. The collision took place on a local roadway, as confirmed by Toronto Police Duty Inspector Phillip Sinclair during a news conference.

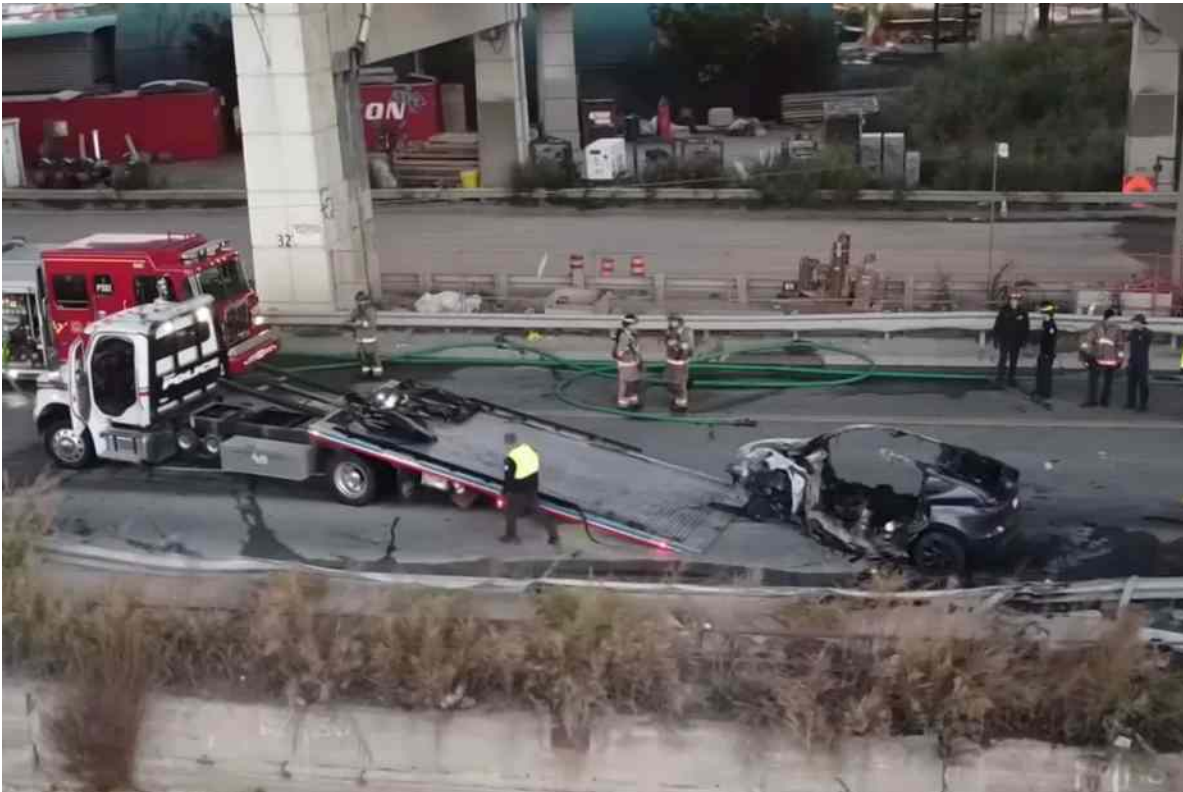
Three men, aged 26, 29, and 32, and a 30-year-old woman were pronounced dead at the scene. A 25-year-old woman survived the horrific accident and was transported to the hospital with non-life-threatening injuries.

The sole survivor owes her life to the quick actions of Rick Harper, a 73-year-old Canada Post worker, who came upon the burning vehicle. Harper, along with other bystanders,

noticed that the passengers were trapped inside the Tesla, unable to open the electronic doors.

Harper recounted to the [Toronto Star](#), “You couldn’t open the doors. I would assume the young lady would have tried to open the door from the inside because she was pretty desperate to get out.” Harper grabbed a bar from his truck and handed it to another bystander, who managed to break the back window and pull the young woman to safety.

ALSO READ: [Elon Musk Responds to Young Girl Who Found Bug in Tesla Model 3](#)



The Tesla Model Y’s electronic doors, which require power to operate, have come under scrutiny following the accident. Authorities are investigating whether the failure of these doors contributed to the fatalities. Harper mentioned that the thick smoke made it difficult to see the other passengers trapped inside, further complicating rescue efforts. Tesla has faced criticism in the past for the design of its manual release levers, which are considered poorly designed and unintuitively placed. These emergency measures require intimate knowledge of the car, something that may not be feasible in a panic situation.

ALSO READ: [Tesla Warns Against Wet Towel Method for Supercharging](#)

The Toronto Police and fire authorities are conducting a thorough investigation into the crash. Deputy Fire Chief Jim Jessop stated that they are examining the possibility that the intensity of the fire was linked to the car's battery cells.

The crash has also highlighted concerns about the safety of electric vehicles in high-speed collisions. Despite the presence of manual release mechanisms in most Tesla models, the ease of access and usability of these features remain contentious issues.



1
5

3

:0
e

automotive technology and the importance of accessible emergency features.